

Technische Daten

Betriebsdruckmax. 150 bar
Temperaturbereich-40° bis max. +200°C
KörperEdelstahl 1.4404
Gewindeanschlusszylindrisch nach ISO 228-1
 konisch nach ISO 7-1
 metrisch nach ISO R-262
O-RingFPM

weitere Abmessungen bis 3" siehe Register 10

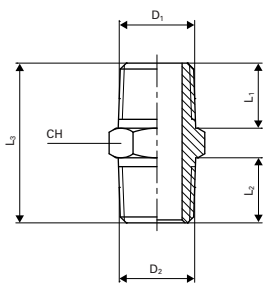
Caractéristiques techniques

Pression de servicemax. 150 bar
Température de service-40° à max. +200°C
CorpsAcier inox 1.4404
Raccord filetécylindrique selon ISO 228-1
 conique selon ISO 7-1
 métrique selon ISO R-262
Joints toriquesFPM

d'autres dimensions jusqu'à 3" voir registre 10

Typ RX 12

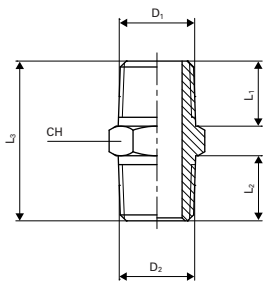
Doppelnippel konisch / Mamelon conique



Typ RX 12	D ₁	D ₂	L ₁	L ₂	L ₃	CH
RX 12 18 18	1/8"	1/8"	7,5	7,5	20	12
RX 12 14 14	1/4"	1/4"	11	11	27	14
RX 12 38 38	3/8"	3/8"	11,5	11,5	28	17
RX 12 12 12	1/2"	1/2"	14	14	34	22

Typ RX 12

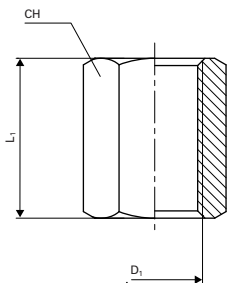
Doppelreduziernippel konisch / Mamelon de réduction conique



Typ RX 12	D ₁	D ₂	L ₁	L ₂	L ₃	CH
RX 12 18 14	1/8"	1/4"	7,5	11	23,5	14
RX 12 14 38	1/4"	3/8"	11	11,5	27,5	17
RX 12 38 12	3/8"	1/2"	11,5	14	31,5	22

Typ RX 13

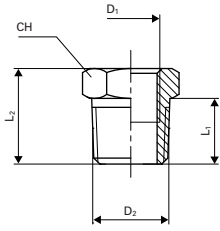
Muffe / Manchon



Typ RX 13	D ₁	L ₁	CH
RX 13 00 18	1/8"	15	14
RX 13 00 14	1/4"	22	17
RX 13 00 38	3/8"	24	22
RX 13 00 12	1/2"	30	27

Typ RX 14

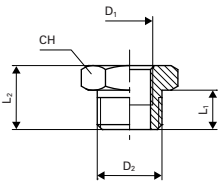
Reduzierbuchse konisch / Réduction conique



Typ RX 014	D ₁	D ₂	L ₁	L ₂	CH
RX 14 18 14	1/8"	1/4"	11	16	14
RX 14 18 38	1/8"	3/8"	11,5	16,5	17
RX 14 18 12	1/8"	1/2"	14	19,5	22
RX 14 14 38	1/4"	3/8"	11,5	16,5	17
RX 14 14 12	1/4"	1/2"	14	19,5	22
RX 14 38 12	3/8"	1/2"	14	19,5	22

Typ RX 15

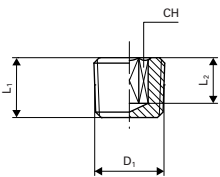
Reduzierbuchse zylindrisch / Réduction cylindrique



Typ RX 15	D ₁	D ₂	L ₁	L ₂	CH
RX 15 M5 18	M5	1/8"	6	10,5	14
RX 15 18 14	1/8"	1/4"	8	13	17
RX 15 14 38	1/4"	3/8"	9	14	19

Typ RX 43

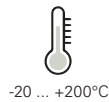
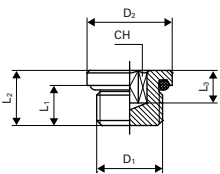
Verschlussstopfen konisch mit Innensechskant / Bouchon mâle cônica avec clé hexagonale



Typ RX 43	D ₁	L ₁	L ₂	CH
RX 43 00 18	1/8"	7,5	6	5
RX 43 00 14	1/4"	11	8	6
RX 43 00 38	3/8"	11,5	8	10
RX 43 00 12	1/2"	14	9,5	10

Typ RX 46

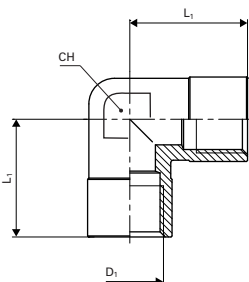
Verschlussstopfen zyl. mit Innensechskant / Bouchon mâle cyl. avec clé hexagonale



Typ RX 46	D ₁	D ₂	L ₁	L ₂	L ₃	CH
RX 46 00 18	1/8"	13	5	7,5	4,5	5
RX 46 00 14	1/4"	16	6,5	9,5	5,5	6
RX 46 00 38	3/8"	20	7	10	6	8
RX 46 00 12	1/2"	25	8,5	12	7	10

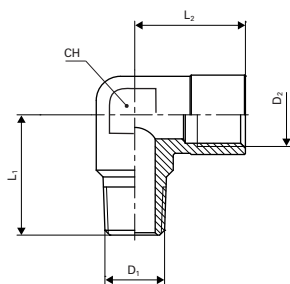
Typ RX 21

Winkel FF / Equerre FF



Typ RX 21	D ₁	L ₁	CH
RX 21 18 18	1/8"	19	10
RX 21 14 14	1/4"	23	12
RX 21 38 38	3/8"	25,5	17
RX 21 12 12	1/2"	32	19

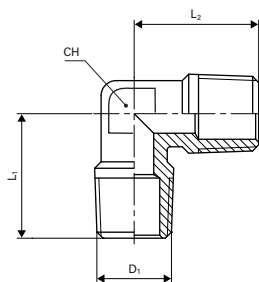
Typ RX 22



Winkel MF konisch / *Equerre MF conique*

Typ RX 22	D ₁	D ₂	L ₁	L ₂	CH
RX 22 18 18	1/8"	1/8"	17	22	10
RX 22 14 14	1/4"	1/4"	21,5	26	12
RX 22 38 38	3/8"	3/8"	24,5	28	17
RX 22 12 12	1/2"	1/2"	30,5	34	19

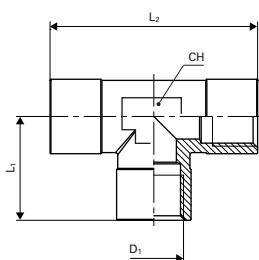
Typ RX 35



Winkel MM konisch / *Equerre MM conique*

Typ RX 35	D ₁	L ₁	L ₂	CH
RX 35 18 18	1/8"	17	17	10
RX 35 14 14	1/4"	21,5	21,5	12
RX 35 38 38	3/8"	24,5	24,5	17
RX 35 12 12	1/2"	30,5	30,5	19

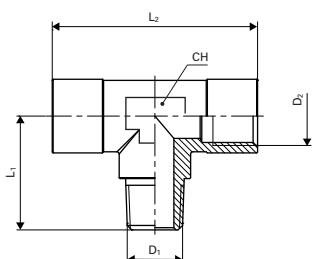
Typ RX 23



T-Stück FFF / *Té FFF*

Typ RX 23	D ₁	L ₁	L ₂	CH
RX 23 18 18	1/8"	22	44	10
RX 23 14 14	1/4"	26	52	12
RX 23 38 38	3/8"	28	56	17
RX 23 12 12	1/2"	34	68	19

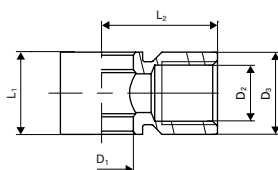
Typ RX 24



T-Stück FMF konisch / *Té FMF conique*

Typ RX 24	D ₁	D ₂	L ₁	L ₂	CH
RX 24 18 18	1/8"	1/8"	17	44	10
RX 24 14 14	1/4"	1/4"	21,5	52	12
RX 24 38 38	3/8"	3/8"	24,5	56	17
RX 24 12 12	1/2"	1/2"	30,5	68	19

Typ RX 42



Einfaches Schwenkringstück F / *Bague orientable simple F*

Typ RX 42	D ₁	D ₂	D ₃	L ₁	L ₂
RX 42 00 18	10	1/8"	14	18,5	15
RX 42 00 14	13,2	1/4"	17	24	17
RX 42 00 38	17	3/8"	20	29	20
RX 42 00 12	21	1/2"	26	34,5	24