

# Push-In Verschraubungen mit M5 – 1/2"-Gewinde, in Edelstahl

## Raccords Push-In avec filetage M5 – 1/2", en acier inox



1

### Technische Daten

**Betriebsdruck** .....gemäss Schlaucheigenschaft,  
-0,99 bis max. 20 bar

**Temperaturbereich** .....gemäss Schlaucheigenschaft,  
-20° bis max. +150°C

**Körper** .....Edelstahl 1.4404

**Löseering** .....Edelstahl 1.4404

**Spannzange** .....Edelstahl 1.4310

**Gewindeanschluss** .....zylindrisch nach ISO 228-1  
konisch nach ISO 7-1  
metrisch nach ISO R-262

**O-Ring** .....FPM

### Caractéristiques techniques

**Pression de service** .....selon le tuyau utilisé,  
-0,99 à max. 20 bar

**Température de service** .....selon le tuyau utilisé,  
-20° à max +150°C

**Corps** .....Acier inox 1.4404

**Poussoir** .....Acier inox 1.4404

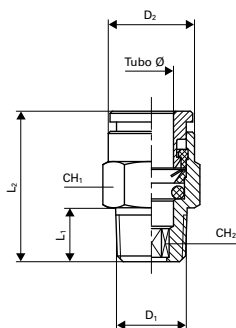
**Pince** .....Acier Inox 1.4310

**Raccord fileté** .....cylindrique selon ISO 228-1  
conique selon ISO 7-1  
métrique selon ISO R-262

**Joint toriques** .....FPM

### Typ MX 11

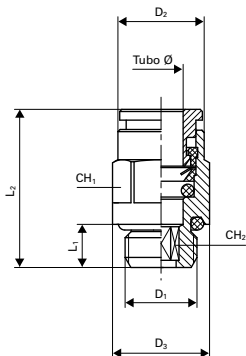
Gerade Verschraubung konisch mit Innensechskant / Union simple mâle con. avec clé hexagonale



Typ MX 11	Tubo Ø	D <sub>1</sub>	D <sub>2</sub>	L <sub>1</sub>	L <sub>2</sub>	CH <sub>1</sub>	CH <sub>2</sub>
MX 11 04 18	4	1/8"	9	7,5	15,5	10	3
MX 11 04 14	4	1/4"	9	11	20	14	3
MX 11 06 18	6	1/8"	12	7,5	20,5	12	4
MX 11 06 14	6	1/4"	12	11	20	14	4
MX 11 08 18	8	1/8"	14	7,5	24,5	14	6
MX 11 08 14	8	1/4"	14	11	23	14	6
MX 11 10 14	10	1/4"	16	11	30	16	8
MX 11 10 38	10	3/8"	16	11,5	23,5	17	8
MX 11 12 38	12	3/8"	19	11,5	27	18	10
MX 11 12 12	12	1/2"	19	14	27	22	10

### Typ MX 12

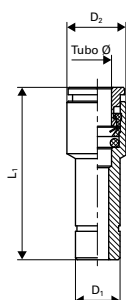
Gerade Verschraubung, zyl. mit O-Ring und Innensechskant  
Union simple mâle, cyl. avec O-Ring et clé hexagonale



Typ MX 12	Tubo Ø	D <sub>1</sub>	D <sub>2</sub>	D <sub>3</sub>	L <sub>1</sub>	L <sub>2</sub>	CH <sub>1</sub>	CH <sub>2</sub>
MX 12 04 M5	4	M5	9	8	4	19	9	–
MX 12 04 18	4	1/8"	9	13	5	16	13	3
MX 12 06 M5	6	M5	12	8	4	22,5	12	–
MX 12 06 18	6	1/8"	12	13	5	19	13	4
MX 12 06 14	6	1/4"	12	16	6,5	18,5	16	4
MX 12 08 18	8	1/8"	14	13	5	22,5	14	6
MX 12 08 14	8	1/4"	14	16	6,5	21	16	6
MX 12 10 14	10	1/4"	16	16	6,5	27,5	16	8
MX 12 10 38	10	3/8"	16	20	7	25	17	8
MX 12 12 38	12	3/8"	19	20	7	28,5	21	10
MX 12 12 12	12	1/2"	19	25	8,5	26,5	22	10

### Typ MX 25

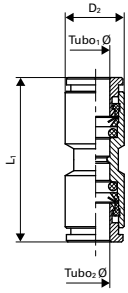
Reduzierstück / Réduction



Typ MX 25	Tubo Ø	D <sub>1</sub>	D <sub>2</sub>	L <sub>1</sub>
MX 25 04 06	4	6	9	31
MX 25 06 08	6	8	12	33
MX 25 08 10	8	10	14	34,5

## Typ MX 26

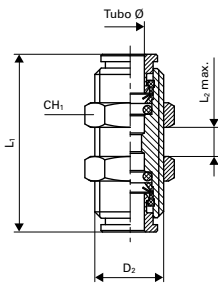
Gerader Verbindungsanschluss / *Union double*



Typ MX 26	Tubo Ø <sub>1</sub>	Tubo Ø <sub>2</sub>	D <sub>2</sub>	L <sub>1</sub>
MX 26 04 04	4	4	9	27
MX 26 06 06	6	6	12	32,5
MX 26 06 04	6	4	12	31
MX 26 08 08	8	8	14	33
MX 26 08 06	8	6	14	34
MX 26 10 10	10	10	16	37,5
MX 26 12 12	12	12	19	39,5

## Typ MX 27

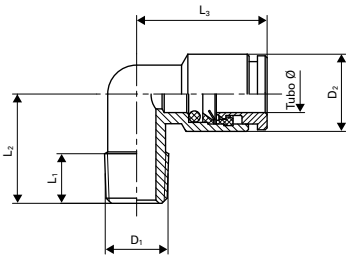
Gerade Schottverschraubung / *Raccord traversé de cloison*



Typ MX 27	Tubo Ø	D <sub>2</sub>	L <sub>1</sub>	L <sub>2</sub>	CH <sub>1</sub>
MX 27 04 04	4	M12 x 1	27	11	15
MX 27 06 06	6	M14 x 1	32,5	16	17
MX 27 08 08	8	M16 x 1	33	17	19
MX 27 10 10	10	M18 x 1	37,5	19	21
MX 27 12 12	12	M20 x 1	39,5	20	24

## Typ MX 14

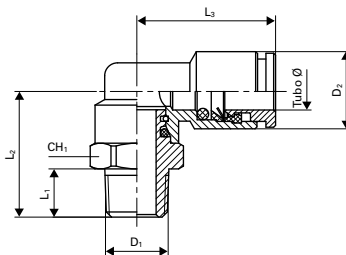
Winkel-Einschraubverschraubung konisch / *Equerre mâle conique*



Typ MX 14	Tubo Ø	D <sub>1</sub>	D <sub>2</sub>	L <sub>1</sub>	L <sub>2</sub>	L <sub>3</sub>
MX 14 04 18	4	1/8"	9	7,5	16	17
MX 14 06 18	6	1/8"	12	7,5	16	20
MX 14 06 14	6	1/4"	12	11	20	20
MX 14 08 18	8	1/8"	14	7,5	17	21
MX 14 08 14	8	1/4"	14	11	20	21
MX 14 10 14	10	1/4"	16	11	22,5	25,5

## Typ MX 15

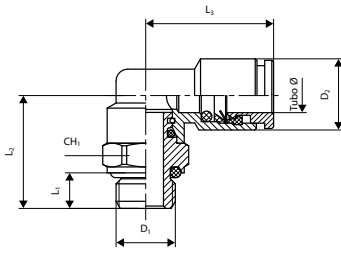
Winkelschwenk-Einschraubverschraubung konisch / *Equerre mâle conique, tournante*



Typ MX 15	Tubo Ø	D <sub>1</sub>	D <sub>2</sub>	L <sub>1</sub>	L <sub>2</sub>	L <sub>3</sub>	CH <sub>1</sub>
MX 15 04 18	4	1/8"	9	7,5	17,5	17	10
MX 15 06 18	6	1/8"	12	7,5	20	21,5	13
MX 15 06 14	6	1/4"	12	11	24	21,5	14
MX 15 08 18	8	1/8"	14	7,5	20	22	13
MX 15 08 14	8	1/4"	14	11	24	22	14
MX 15 10 14	10	1/4"	16	11	26,5	25,5	16
MX 15 10 38	10	3/8"	16	11,5	27	25,5	17
MX 15 12 38	12	3/8"	19	11,5	30,5	28	21
MX 15 12 12	12	1/2"	19	14	33,5	28	22

## Typ MX 16

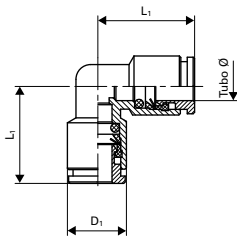
Winkelschwenk-Einschraubverschraubung, zyl. mit O-Ring  
*Equerre mâle, tournante, cyl. avec O-Ring*



Typ MX 16	Tubo Ø	D <sub>1</sub>	D <sub>2</sub>	L <sub>1</sub>	L <sub>2</sub>	L <sub>3</sub>	CH <sub>1</sub>
MX 16 04 M5	4	M5	9	4	14	17	9
MX 16 04 18	4	1/8"	9	5	16	17	13
MX 16 06 M5	6	M5	12	4	15,5	20,5	9
MX 16 06 18	6	1/8"	12	5	18	21,5	13
MX 16 06 14	6	1/4"	12	6,5	20	21,5	16
MX 16 08 18	8	1/8"	14	5	18	22	13
MX 16 08 14	8	1/4"	14	6,5	20	22	16
MX 16 10 14	10	1/4"	16	6,5	22,5	25,5	16
MX 16 10 38	10	3/8"	16	7	24	25,5	21
MX 16 12 38	12	3/8"	19	7	26,5	28	21
MX 16 12 12	12	1/2"	19	8,5	31	28	22

## Typ MX 28

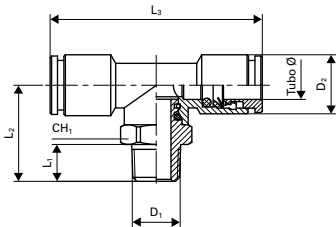
Winkelverschraubung egal / *Equerre égale*



Typ MX 28	Tubo Ø	D <sub>1</sub>	L <sub>1</sub>
MX 28 04 04	4	9	17
MX 28 06 06	6	12	20
MX 28 08 08	8	14	21
MX 28 10 10	10	16	25
MX 28 12 12	12	19	27

## Typ MX 20

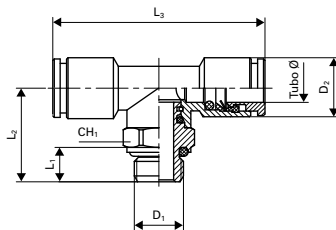
T-Schwenkverschraubung konisch / *Té central conique, tournant*



Typ MX 20	Tubo Ø	D <sub>1</sub>	D <sub>2</sub>	L <sub>1</sub>	L <sub>2</sub>	L <sub>3</sub>	CH <sub>1</sub>
MX 20 04 18	4	1/8"	9	7,5	21,5	34	10
MX 20 06 18	6	1/8"	12	7,5	24,5	42	13
MX 20 06 14	6	1/4"	12	11	28,5	42	14
MX 20 08 18	8	1/8"	14	7,5	24,5	43	13
MX 20 08 14	8	1/4"	14	11	28,5	43	14
MX 20 10 14	10	1/4"	16	11	32	50	16
MX 20 10 38	10	3/8"	16	11,5	32,5	50	17

## Typ MX 21

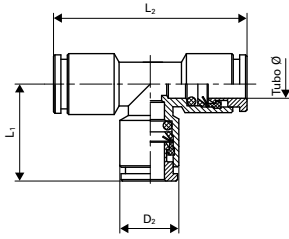
T-Schwenkverschraubung, zyl. mit O-Ring / *Té central tournant, cyl. avec O-Ring*



Typ MX 21	Tubo Ø	D <sub>1</sub>	D <sub>2</sub>	L <sub>1</sub>	L <sub>2</sub>	L <sub>3</sub>	CH <sub>1</sub>
MX 21 04 M5	4	M5	9	4	18	34	9
MX 21 04 18	4	1/8"	9	5	20	34	13
MX 21 06 18	6	1/8"	12	5	22,5	42	13
MX 21 06 14	6	1/4"	12	6,5	24,5	42	16
MX 21 08 18	8	1/8"	14	5	22,5	43	13
MX 21 08 14	8	1/4"	14	6,5	24,5	43	16
MX 21 10 14	10	1/4"	16	6,5	25,5	50	16
MX 21 10 38	10	3/8"	16	7	27	50	21

## Typ MX 29

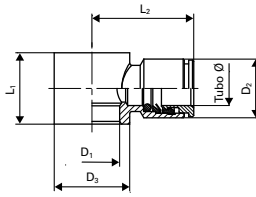
T-Verschraubung egal / Tê égale



Typ MX 29	Tube Ø	D <sub>2</sub>	L <sub>1</sub>	L <sub>2</sub>
MX 29 04 04	4	9	17	34
MX 29 06 06	6	12	20	40
MX 29 08 08	8	14	21	42
MX 29 10 10	10	16	25	50
MX 29 12 12	12	19	27	54

## Typ MX 35

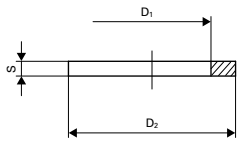
Einfaches Schwenkringstück / Bague orientable simple



Typ MX 35	Tube Ø	D <sub>1</sub>	D <sub>2</sub>	D <sub>3</sub>	L <sub>1</sub>	L <sub>2</sub>
MX 35 04 18	4	1/8"	9	14	15	19,5
MX 35 06 18	6	1/8"	12	14	15	22
MX 35 06 14	6	1/4"	12	18	17	23,5
MX 35 08 18	8	1/8"	14	14	15	22,5
MX 35 08 14	8	1/4"	14	18	17	24
MX 35 10 14	10	1/4"	14	18	17	27
MX 35 10 38	10	3/8"	16	22	20	29
MX 35 12 38	12	3/8"	16	22	20	31
MX 35 12 12	12	1/2"	19	26	24	33

## Typ RA 97

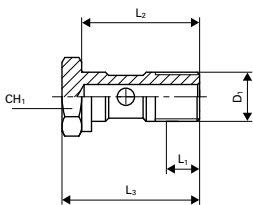
PTFE Dichtring / Joint en PTFE



Typ RA 97	D <sub>1</sub>	D <sub>2</sub>	S
RA 97 00 18	9,9	14	2
RA 97 00 14	13,1	18	2
RA 97 00 38	16,8	21,5	2
RA 97 00 12	21	25,5	2

## Typ MX 31

Einfache Hohlschraube / Vis creuse simple



Typ MX 31	D <sub>1</sub>	L <sub>1</sub>	L <sub>2</sub>	L <sub>3</sub>	CH <sub>1</sub>
MX 31 00 18	1/8"	6	25	29	14
MX 31 00 14	1/4"	6,5	27,5	32,5	17
MX 31 00 38	3/8"	7	30	36	21
MX 31 00 12	1/2"	8,5	35,5	41,5	26

Technische und massliche Änderungen vorbehalten. / Sous réserve de modifications techniques et de cotes.